



A FREE HOUSE FOR FARNBOROUGH!

BEER drinkers in the Farnborough area had a very pleasant surprise in November when the Prince of Wales, an ex-Watney pub in Rectory Road reopened as a free house.

AT 7.30 on the evening of November 6th the doors of the pub were opened to a queue of customers who were eager to try the town's first free house and its range of five real ales. Needless to say, the queue included a number of CAMRA members, and I'm sure they were not there just as News of the Booze reporters! Licensee John Medhurst, whose firm Memory Inns Ltd. now owns the Prince of Wales, provided a free buffet and half-price drinks until nine o'clock on the reopening night, which proved an extremely popular attraction with the large crowd of first night customers!

THE real ales provided are King & Barnes bitter, Eldridge Pope 'Dorset' IPA, Hall & Woodhouse Badger Best Bitter, Wethered's S.P.A. and Ind Coope Burton Ale, all served by handpumps. Despite the staff being under considerable pressure serving the large crowd, all the beers were in superb condition throughout the evening, whilst service was fast and friendly - not easy under shoulder to shoulder conditions! If this article sounds like an advertisement, then please rest assured that it is unbiased! My enthusiasm is based on just one visit (so far) to this pub, but a CAMRA Social arranged for Tuesday, December 8th at the 'Prince' will give members a chance to judge for themselves. Whatever your opinion of this pub, it is certainly a breakthrough for Farnborough, and we wish John Medhurst and managers Lyn and Andy the best of luck with their venture.

THE Prince of Wales is situated in Rectory Road, just a few yards from Farnborough North station on the Guildford to Reading railway line.

- Mike Andrew.

Campaign for Real Ale

Surrey/Hampshire Borders Branch

NEWS OF THE BOOZE is published by the Surrey/Hampshire Borders Branch of the Campaign for Real Ale Ltd.

Editor: Mike Andrew, 13 St Georges Rd, Farnham, Surrey.

Telephone: Farnham 723116.



CHEAP ALE

IN the Autumn edition of "News of the Booze" we reported that F. W. Francis & Co. of Guildford were offering a discount of 20% to CAMRA members. Mr. D. Francis, the firm's managing director, points out that "although it probably works out at about 20% off retail, the beer is supplied to CAMRA members at the trade price and so this could fluctuate according to the type of natural beer ordered."

FOR further details of this offer, see the advertisement on page 4. To get this discount make sure that you take your current CAMRA membership card to the shop.

ODDS &...

SIMPKISS WAKE

THE Sandrock, Farnham, was recently a scene of great sadness when a cask from the final batch of Simpkiess mild went on sale instead of the more usual Batham's mild.

ALTON BEEREX SUCCESS

CAMRA's first Alton Beer Festival was every bit as successful as had been hoped. All tickets were sold, the beer lasted until the end of the evening with very little wastage, and a good time was had by all. The event was much smaller than Farnham Beerex (quite a pleasant contrast), but nevertheless took a lot of effort to organise, being staged entirely by Alton members. Thanks and congratulations to Roland, Steve, Jerry, Geoff, Paul and Chris, plus their wives and girlfriends for a splendid effort, which incidentally raised quite a few quid for Campaign funds!

...ENDS

British beer needs you



Membership form

I/We wish to become a member/members of the Campaign for Real Ale Limited. I/We agree to abide by the Memorandum and Articles of Association of the Campaign.

- I enclose £7 (£10 Overseas) for full membership for a year ☐
 We enclose £7 for husband and wife membership ☐
 or I/We enclose completed standing order authority ☐
 (Any additional amount will be welcomed as a donation)

FULL NAME(S) (Block capitals)

FULL POSTAL ADDRESS (Block capitals)

SIGNATURE DATE

Cheques should be made payable to Campaign for Real Ale Limited.

STANDING ORDER FORM

To (your Bank)
 Please forward to Barclays Bank Ltd., 3 High Street, St Albans (20- 74 09) for the credit of CAMRA Limited subscription account; A/c No. 50187887; now the sum of £7 and continue to pay this sum on the annually until further notice.

SIGNATURE DATE

NAME (Block capitals)

BANK A/C NO. AND ADDRESS



● All applications should be sent to Membership, CAMRA, 34 Alma Road, St Albans, Herts AL1 3BW.

"WHERE HAVE ALL THE BREWERIES GONE?"

NORMAN Barber's recently published directory "Where Have all the Breweries Gone?" is now available, from the publisher or from CAMRA headquarters. It was to be expected that a specialised publication such as this would be expensive, but I must admit to being a little disappointed with the book's layout. The format is of 56 A4 pages including the paper cover, which is what one might expect for the price, but for the saving of one extra pair of pages the introduction, contents and part of the directory for the county of Avon have all been crammed on the inside of the front cover. Similarly, the index continues onto the inside of the back cover, which does not detract from the book's usefulness, but does indicate, in my opinion, an unnecessary degree of 'pennypinching'.

The book sets out to list all known breweries which operate, or have operated this century. It certainly

includes a lot of them, but the entries for our area are certainly not complete, even with regard to recent history. For instance, according to the directory, all brewing in Alton ceased during 1970, whereas keg beer is still produced there by Bass at the former Harp lager brewery. Another criticism is the inclusion of a reference under "East Grotley", a fictional district invented as a joke by Manchester CAMRA members. Without wishing to be branded as a spoilsport, I think that jokes are out of place in a serious reference work.

Despite these criticisms, Mr Barber, with help from the Brewery History Society has compiled a unique and worthwhile reference book which will interest anyone even remotely interested in beer or company histories.

Where Have all the Breweries Gone? by Norman Barber is published by Neil Richardson, 375 Chorley Rd, Swinton M27 2AY, price £3.50 -M.A.

REAL WATNEYS?

WATNEY have announced that Stag and Tamplins bitters are to be introduced at the Wheatsheaf in Farnham, served by "traditional handpump". Last time they said that (about the Duke of Cambridge, Farnham) all we got was yet another DCL air pressure 'handpump'. We shall see...

BEER GUIDE OFFERS

READERS of News of the Booze can obtain the following local beer guides at special prices.

Real Ale in Surrey: now only 50p (post free)

Real Ale in Hampshire, 1981-1982: now only 80p (usual price £1) - post free

Surrey & Hampshire guides £1.25 for both, including postage.

Farnham Ale - a guide to pubs in Farnham and surrounding villages: send 2 second class postage stamps (free to purchasers of Real Ale in Surrey.)

We also have a few copies of the Isle of Man guide, so if you are planning next year's holiday there send 50p (post free)

Cheques should be payable to "CAMRA Surrey/Hants Borders". Send your order to M. Andrew, 13 St Georges Road, Farnham.

WHERE SHALL WE GO NEXT?

THE 'Blackwater Valley' sub-branch, covering the Aldershot, Farnborough and Fleet areas was, until recently, the most active part of the branch. Now, however, there is an apparent lack of interest there. Can any readers in that area suggest some new meeting venues or perhaps a change of evening which might attract more members along?

GET YOUR NEWSLETTER POSTED

Unless you can make it to at least one CAMRA branch meeting each month, the only way you can be certain of receiving each edition of News of the Booze is by filling in this form.

To: M. Andrew, 13 St George's Road, Farnham, Surrey GU9 8NA.

Please send me the next ___ copies of "News of the Booze".

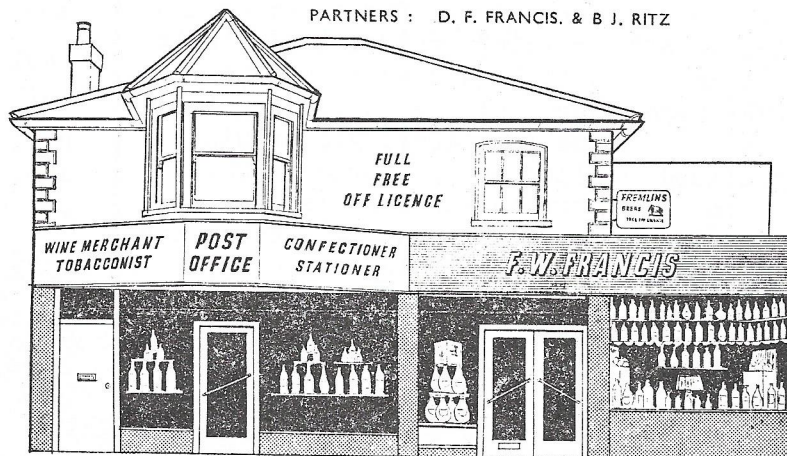
I enclose a 9"x4" stamped, self addressed envelope for each copy requested.

(see AGM Report for details of future format and frequency, and remember to stamp your envelopes at the new postage rates)

Name.....Address.....

Telephones: Guildford 504762 & 75355 (STD Code 0483)

Established 1942

F. W. FRANCIS & COMPANYWINE and
SPIRIT
MERCHANTSPERSONAL
ATTENTIONVAT Regd. No.
211-4716-05BEERS
MINERALS
AND
CORDIALSGlasses loaned
FREE
for your partyDAILY
DELIVERIES

F. W. Francis & Co. are pleased to offer members of CAMRA special prices for the purchase of naturally conditioned beers. The products of the following brewers are regularly stocked by us: BRAKSPEARS, DEVENISH, EVERARDS, FULLERS, GALES, GIBBS, KING & BARNES, MARSTONS, MARTLET, MORLANDS, RAVEN, ROBINSONS, SAMUEL SMITH'S, THEAKSTONS, etc.

- REMEMBER YOUR CAMRA MEMBERSHIP CARD

75 - 77 - 79 STOKE ROAD, GUILDFORD, SURREY, GU1 4HT

Write your own Pub Guide

by Michael Walsh

Ever tracked down a pub recommended in some guide only to find that similarities between the purple prose and the living reality are, to say the least, tenuous? Our beer specialist has some words to say on this and feels that the only solution is to start compiling your own guide.

THE PUBLICATION OF PUB GUIDES has come on remarkably since 1974, though the trend probably started in 1971 when CAMRA was founded and picked up with the publication of its first guide-book. In my experience pub guides are no substitute for your own memory. And indeed, most of the recent pamphlets and books have serious shortcomings. Here are a few I have sampled.



CAMRA Guide-books: There are now a few dozen of these regional guides on sale in their respective parts of the country. They deal only with the Real Ale establishments in a small part of the nation, covered by the local CAMRA group. Though they only cost 25p, or thereabouts, publication quality varies from the crudely duplicated and unstapled fold-up to the photolithoed booklet. All represent good value for money because, being highly localised, they are much more useful to the ordinary drinker who may not travel at all than the national CAMRA guide.

Unfortunately, their main criteria is the availability of Real Ale on the premises so that many pubs worth a visit from some other point of view are automatically excluded. By relying exclusively on the local CAMRA guide, you could miss out on hostelrys of great architectural or historical interest, on some superb food or pub entertainment. It appears to be a fact of observation that really interesting pubs are keg-only establishments while Real Ale taverns are frequently spit-'n-sawdust alcohol emporia with nothing to recommend them apart from superb beer.

However, regional CAMRA guide-books all give details of amenities other than the beer and the better written ones incorporate a potted history of the pub so that first-time visitors have some guidelines to sort out the wheat from the chaff. Readers should be aware of the following phrases found in CAMRA guides, together with their real meanings.

CAMRA-Speak

Friendly pub
Basic local pub
Stone-built
Popular
Unspoilt country pub
Pleasant inn in pretty village
Modernised

16th century local
17th century local
18th century local
Locals' pub
Odd clientele
Pleasant atmosphere
Traditional pub
Riverside pub
Quiet pub

Young persons' pub

Ordinary local
Busy
Smuggler's haunt/medieval building
Large pub
Lively
Unpretentious
Attractive pub

Theatrical associations

Serious-minded local
Worth going out of your way to find

English Equivalent

Drunken licensee
Rat-hole
Freezing cold
Suffocating
No paper in the toilet
Tourist infested
Licensee wears suit and tie and has degree in Economics
17th century local
18th century local
Victorian pub
Strangers made unwelcome
Gay pub
Drunken clientele
Licensee thinks he is God
Full of students
Miserable licensee and no music
Acne-stricken yobboos throwing up all over the place
For alcoholics
Service diabolical
Expensive

Young persons' pub (v.i.)
Fights break out regularly
No lock on WC door
Twee and frighteningly expensive
Maggie Smith once peeked inside and quite rightly went on her way
The vicar drops in for a pint
You have to go out of your way to find

'Write your own Pub Guide' is extracted from an article of the same name, first published in Men Only magazine, by kind permission of Paul Raymond Publications Ltd. Whilst a lighthearted 'dig' at CAMRA, there are, perhaps, a few "home truths" in the article! If it is any consolation, the author does at least hold CAMRA guides in higher esteem than the Egon Ronay pub guide!

- Mike Andrew.

So what is the answer for the committed ordinary drinker who would like a handy catalogue of his favourite pubs to sustain his failing and perhaps ale-befuddled memory? The answer is the Do-It-Yourself Pub Guide, courtesy of this magazine! Below you will find a report sheet, ready printed. Carefully cut it out and get 20 copies of it Xeroxed, putting the cut-out master away in case you should ever need to print some more. If you haven't got a Xerox machine at work and don't have access to someone's copier, you'll find a document copying device of some kind at most large Post Offices. Alternatively, and especially in London, you'll find a host of newly sprung-up photocopying service firms who'll run off your report sheets for about a quid.

Keep a blank or two in your wallet and whenever you visit a new pub, fill it in on the spot and add it to your file. Then the next time you're stuck for an idea, go through your file to select the best pub for the sort of evening out you have in mind. Keep it safely - your personal pub guide might become as valuable a commodity as those little black books on which most bachelors raise a bob or two on getting married!

PERSONAL PUB GUIDE

Name of pub
Address of pub

Telephone number
Name of landlord/manager/licensee:

Beer Sold	Dispensing System	Price per pint	Marks out of 10
(1)			
(2)			
(3)			
(4)			

Check Points: Cigarettes behind bar ☐ Cigarettes in machine ☐ Cigars ☐ Pipe tobacco ☐ Hot bar snacks ☐
Cold bar snacks ☐ Full restaurant service ☐ Accommodation ☐ Private resident's bar ☐ All-night drinking ☐
Live entertainment ☐ Juke-box ☐

Toilets: Urinal overflowing ☐ Paper in toilets ☐ Lock on WC doors ☐ Cubicle walls drilled ☐ Plug available for sink ☐
Soap ☐ Hot water ☐

Record here any original or memorable graffiti:

Fruit Machine: Name: _____ Manufacturer: _____ Cost per play: _____
Return on £1 'investment' £.....

Barmaids

Big boobs
Low necklines
Braless
Miniskirts
Pretty
Talkative
Probability (Yes/No)

Flat chests
Woolly jumpers
Surgical corsetry
Trousers
Pretty ugly
Silent/student
No thanks

Clientèle

Are there any desirable young ladies?
Are there any violent young men?

Overall marks out of 100 for:

Quality of draught beers:
Probable barmaid/clientèle:
Overall amenity value:

Record here notes on neighbourhood, layout, service, furnishings, décor and lighting:

Schedule next visit here

About:
Next:
Never again:
As soon as possible:
When new licensee arrives:

AGM REPORT

THE 1981 Annual General Meeting of the Surrey/Hants Borders Branch of CAMRA took place at the Star, Quarry Street, Guildford on Friday, November 27th.

FINANCES

CHAIRMAN Alan Mason opened the meeting and called on Nick Spindler, acting Treasurer, to present the accounts. Nick has stood in for Hans Nader since early October, and the meeting was thankful to Nick who, despite difficulty in collecting together records from two previous treasurers, had prepared a statement of accounts since taking over. The statement showed a healthy bank balance, from which it was decided to keep back a sufficiently large amount as contingency funds for the financing of forthcoming Surrey and Hampshire real ale guides and beer exhibitions. It was agreed that instead of the 10% branch profit levy, a larger donation of £230 would be sent immediately to CAMRA headquarters in view of their present financial difficulties.

NEW COMMITTEE

THE election of officers resulted in the election, unopposed, of Mike Andrew (chairman), Alan Davies (secretary) and Nick Spindler (treasurer). The rest of the committee would continue to consist of two representatives from each sub-branch, but in future the newsletter would carry a "contact" name for each geographical area. (NB. the sub-branches should elect their committee members prior to the meeting scheduled for January 8th.)

A VOTE of thanks to the outgoing committee was well deserved. Particular thanks are due to Alan Mason, a cornerstone of the branch for the last couple of years, and Dave Brittain for his fine handling of all the branch paperwork. It is to be hoped that they are able to continue as active members for many more years.

PRESTON POT

STEVE Cook gave a report on the highly successful first Alton Beer Festival (see page 2) at the end of which Alan Mason presented the "Cyril Preston Pot" to Steve to hold on behalf of the Alton sub-branch in recognition of their hard work (and worry!) in organising this important event. In making the award, Alan Mason declared that he had enjoyed the Alton festival more than any other 'beerex' he had attended - a tribute to the friendliness of this kind of small festival, as well as its organisers and patrons.

PUB OF THE MONTH

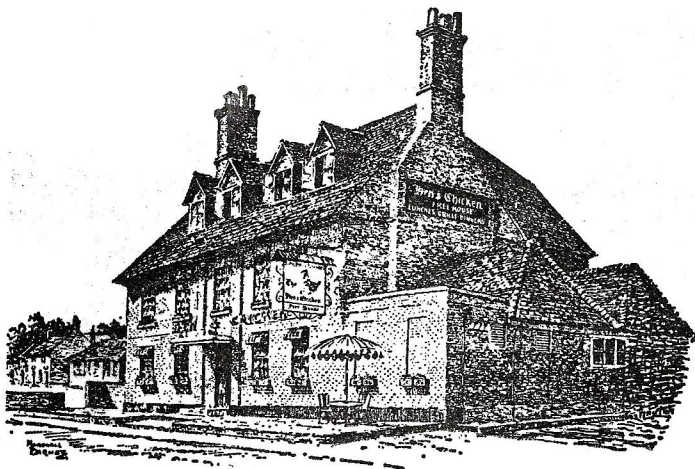
ROLAND Edwards reported that work was about to begin on the next edition of Real Ale in Hampshire, which would probably this time be a selective "good beer" guide. Roland also suggested that we hold regular "Pub of the Month" socials, as he and a number of other local members had attended a North Hants branch social of this type, and had found it to be not only the most enjoyable meeting of the year, but a valuable meeting from a 'public relations' point of view, as it involved the whole pub, members and non-members alike, in darts matches, a free buffet and a general party atmosphere. It was agreed that this was a good idea, but very few people are willing to help organise the present programme of meetings.

SURREY LIASON

IT was reported that work is soon to begin on a new edition of Real Ale in Surrey. Steve Harrison voiced the point of view that this should now be a selective guide, a suggestion which met with general approval, as some real ale pubs were poor advertisements for real ale. Steve agreed to represent the branch on the Surrey Liason Committee and the beer guide sub-committee.

NEWSLETTER

THERE followed a discussion on the future of the newsletter. After much debate about format, frequency and distribution it was decided that editions aimed at the public as well as members should be published to coincide with the Farnham and Alton beer festivals and distributed via pubs in addition to the festivals. The rest of the year would be catered for by a simple monthly news sheet distributed to members at CAMRA meetings. Both types of newsletter would be available to members not only at meetings, but by post on receipt of a stamped, addressed envelope. It was agreed that the first edition of the newsletter following the A.G.M. would be posted to all members in order to draw their attention to this new system.



The Hen and Chicken, Froyle, near Alton.

A VERY LOCAL BEER

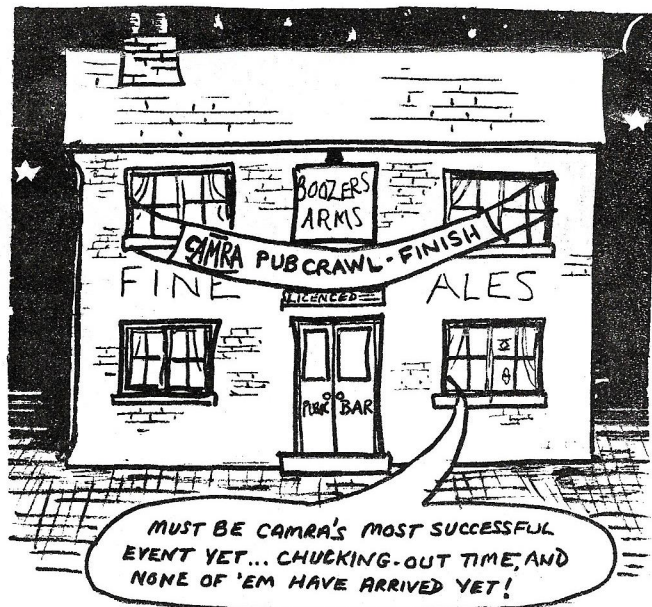
Alongside the Brakspear and Badger handpumps at the Hen and Chicken, on the A31 at Upper Froyle is a pump marked "Hen & Chicken Special". One might be forgiven for expecting it to be yet another Bourne Valley house beer, tasting almost the same as Albert Ale, but it certainly isn't. Hen and Chicken Special is, in fact, brewed by Ringwood Brewery, who do not normally produce beers for individual pubs.

The beer has a very pleasant and individual taste, and is deceptively strong. According to the pub's landlord the beer is brewed to a 1920s recipe discovered in a Froyle attic! If this is so, then Hen & Chicken Special is a special beer indeed!

Best Wishes for
Christmas and the New Year

ANOTHER NEW BEER

THOSE of us who braved the rain for the CAMRA outing to Salisbury were rewarded with (amongst other beers) a pint from the first trial batch of Hall & Woodhouse's new strong bitter, which has the unlikely name of "Tanglefoot Ale". The beer has a pale straw-colouring and an excellent clean, bitter taste. Now the rest of you can try it without travelling too far, as it has replaced the Samuel Smiths O.B.B. at the Hop Blossom in Long Garden Walk, Farnham. Anyone pining for the Ballards Best axed at the Sandrock will be pleased to know that it has replaced the Devenish bitter at the Hop Blossom, and is also now available at the Mariners, Frensham, and at the Blue Bell, Batts Corner, near Dockenfield. The Blue Bell has also added Brakspear Special Bitter to its range.



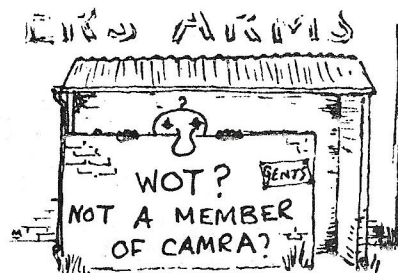
A MILD SUCCESS

THE Batham's mild which is served straight from the cask at the Sandrock, Farnham is usually only available in the summer, as during the winter what little space there is behind the bar is taken up with a heavier brew, usually King & Barnes Old, or sometimes Ballards Wassail.

DURING the past summer, however, sales of mild have outstripped sales of Ballards Best Bitter, with the result that landlord Andy Bujock plans to put Batham's mild on handpump in place of the Ballard's. Whilst it is sad to see our most local best bitter disappear, few would argue that only a rather special pub would bother to offer the choice of several bitters, real mild, local cider and old ale all at the same time!

BRANCH CONTACTS

CHAIRMAN: Mike Andrew (address on page 2)
SECRETARY: Alan Davies, 68 Bishopswood, St Johns, Woking
tel. Woking 20579.
TREASURER: Nick Spindler, 5 Papercourt Lane, Ripley,
near Woking. tel. Ripley 2223
AREA CONTACTS: Alton- Steve Cook, Alton 85079
Guildford- Martin Cave, Guildford 77068
Aldershot & Farnborough- Dave Jones, Aldershot 312350
Hindhead & Haslemere- volunteer required!
Fleet- volunteer required... are you free, Gerald?!
Farnham- chairman
Woking- secretary



Then fill in the form
on page 2

SURREY/HANTS BORDERS

CAMRA Branch Meetings

WINTER 1981-2

Meetings begin at 8.30pm unless otherwise stated.

DECEMBER

MONDAY 21st - BRANCH CHRISTMAS PARTY at the Royal Staff, Staff Road (top of Waterloo Road), Aldershot. CURATE'S EGG will present "A Tale of Ale", a musical anthology. There will also be a buffet, raffle, and a bar extension has been applied for. All CAMRA members and their guests are very welcome.

JANUARY

WEDNESDAY 6th - Another "Ripley Ramble, starting at the Half Moon.

FRIDAY 8th - COMMITTEE MEETING, contact secretary for details.

TUESDAY 12th - Pub games night at the BLUE BOY, Station Hill, FARNHAM.

TUESDAY 19th - TRISTINS, Woking. A social evening in the newly opened real ale bar, reported to be "pricey but pleasant".

THURSDAY 21st - THE DUKE'S HEAD, Butts Road, ALTON.

* THURSDAY 28th - THE DOVER ARMS, ASH.

FEBRUARY

* WEDNESDAY, 3rd - THE BLACK HORSE, GOMSHALL. A Young's house near the station.

TUESDAY 9th - Our now traditional "Make Mine Mild" night at the HOP BLOSSOM, Long Garden Walk (off Castle Street), Farnham. In addition to mild, the Hop Blossom sells traditional cider and a wide range of bitters (see "Another New Beer", page 7.) Our mild nights, however, usually result in mild drinkers going home with a few prizes, so it may be worth your while to stick with the "Marston's Mercian".

* TUESDAY 16th - Woking area meeting to be arranged. See "What's Brewing" or 'phone Alan Davies, Woking 20579.

THURSDAY 18th - A social at the GREYFRIAR, CHAWTON. This a very pleasant and friendly Whitbread pub (Strong Country & Pompey Royal) in Chawton village, just off the A31 south-west of Alton.

NON-MEMBERS WELCOME



* meeting to be confirmed - check on Farnham 723116